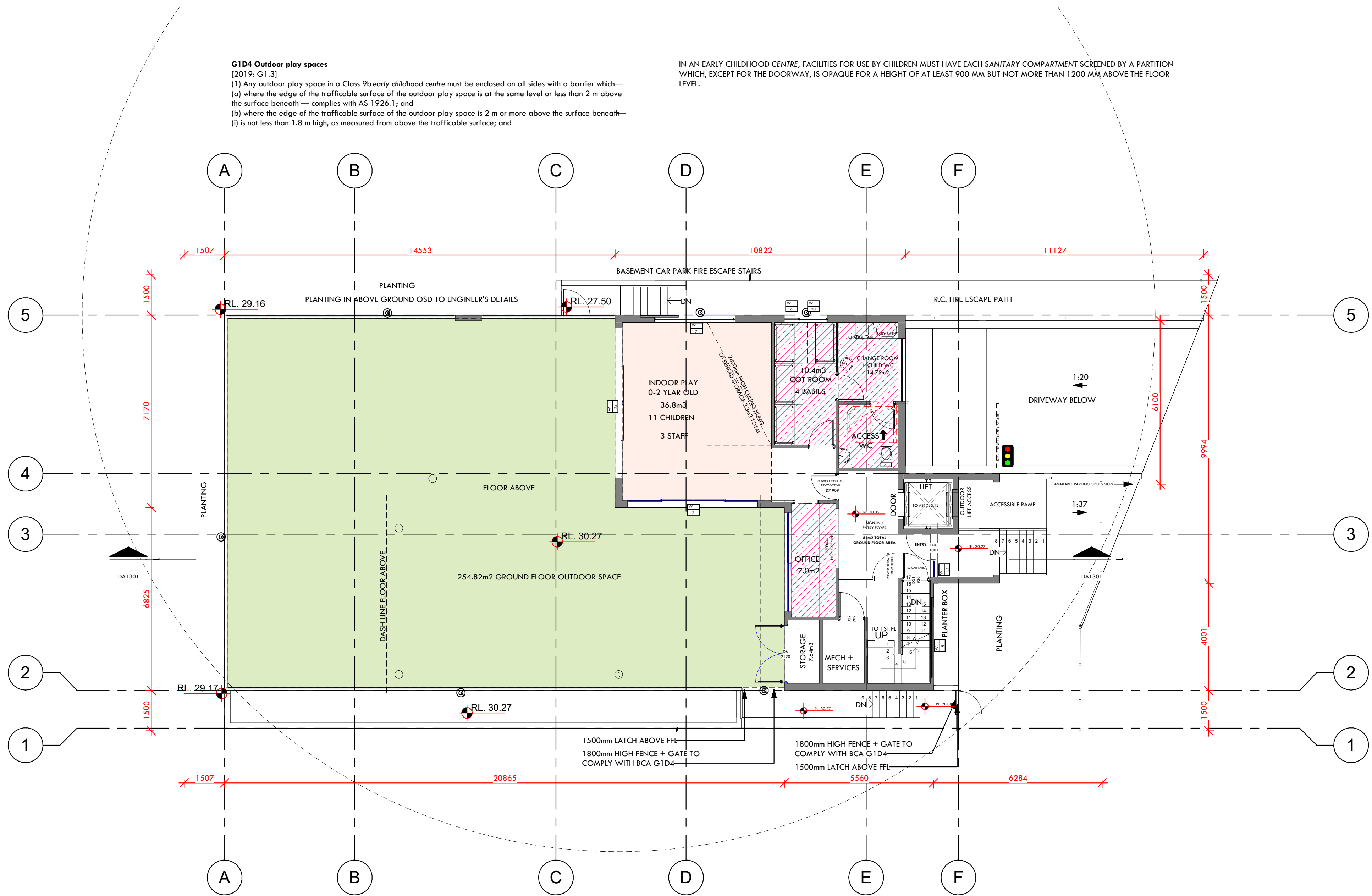


HATCH	MATERIAL
	MASONRY IN SECTION
	TIMBER IN SECTION
	PLASTERBOARD IN SECTION
	EXISTING STRUCTURES
	FLOOR TILES
	CARPET
	FLOOR BOARDS
	POOL FENCE + GATE TO AS1926.1-2012
	ARTICULATION ZONE
	ARTICULATION ZONE ENCROACHMENT
	WINDOW HEAD FIRE SPRINKLER
	OUTLINE OF FLOOR ABOVE
	SMOKE ALARM DETECTOR TO AS3786
	DEMOLISHED STRUCTURES TO AS2601-2001
	FIRE RATED
	HOT WATER SYSTEM AS PER BASIX
	ELECTRICAL METER BOX
	WATER METER
	GAS METER
	POOL PUMP IN SOUNDPROOF HOUSING
	SELECTED DOWNPIPES
	SWIMMING POOL / SPA CONSTRUCTION TO AS1926.1, AS1926.2, AS1926.3



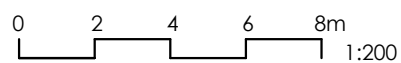
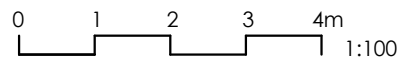
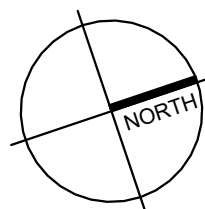
# GROUND FLOOR PLAN

Scale: 1 : 100

## NOTE:

### CENTRE TO PROVIDE

- (9) A Class 9b early childhood centre must be provided with
  - a kitchen or food preparation area with a kitchen sink, separate hand washing facilities, space for a refrigerator and space for cooking facilities, with—the facilities protected by a door or gate with child proof latches to prevent unsupervised access to the
- (ii) (b) (c) facilities by children younger than 5 years old; and the ability to facilitate supervision of children from the facilities if the early childhood centre accommodates children younger than 2 years old; and one bath, shower or shower-bath; and if the centre accommodates children younger than 3 years old—
- (i) a laundry facility comprising a washtub and space in the same room for a washing machine; and
- (ii) a bench type baby bath, which is within 1 m of the nappy change bench; and
- (iii) a nappy changing bench which—
  - (A) is within 1 m of separate adult hand washing facilities and bench type baby bath; and
  - (B) must be not less than 0.9 m2 in area and at a height of not less than 850 mm, but not more than 900 mm above the finished floor level; and
  - (C) must have a space not less than 800 mm high, 500 mm wide and 800 mm deep for the storage of steps; and
  - (D) is positioned to permit a staff member changing a nappy to have visibility of the play area at all times.



Date Rev Amendment

project:  
12 SEGERS AVENUE, PADSTOW

NOT FOR CONSTRUCTION

Verify all dimensions on the building drawings with contractors. Do not scale all drawings. Work to written dimensions. Report any discrepancies for resolution. All work to be completed in accordance with relevant parts of the BCA and the Environmental Planning and Assessment Act and regulations under the Act. © Copyright in all drawings and designs prepared by Space 4U Pty Ltd. and in any works extracted from these documents and designs shall remain the property of Space 4U Pty Ltd. or its licensee named in Space 4U Pty Ltd.

bdag  
ACCREDITED  
BUILDING DESIGNERS  
Accreditation Number: 6467

bdag  
BUILDING DESIGNERS  
ASSOCIATION OF AUSTRALIA  
Head Office: 163A WEST ROYAL STREET, ARLBURNE NSW 2205  
E: info@space4u1821.com

DESIGNER: ADE HEAD  
AUTHOR: ADE HEAD  
PROJECT: 12 SEGERS AVENUE, PADSTOW

Title: GROUND FLOOR PLAN

Lot Number: 28 DP 20572

Job Number: 24-6

Stage: DA

Class Type:

Date: MAY 24

Scale @ A1: 1:100

Drawing no: DA1206